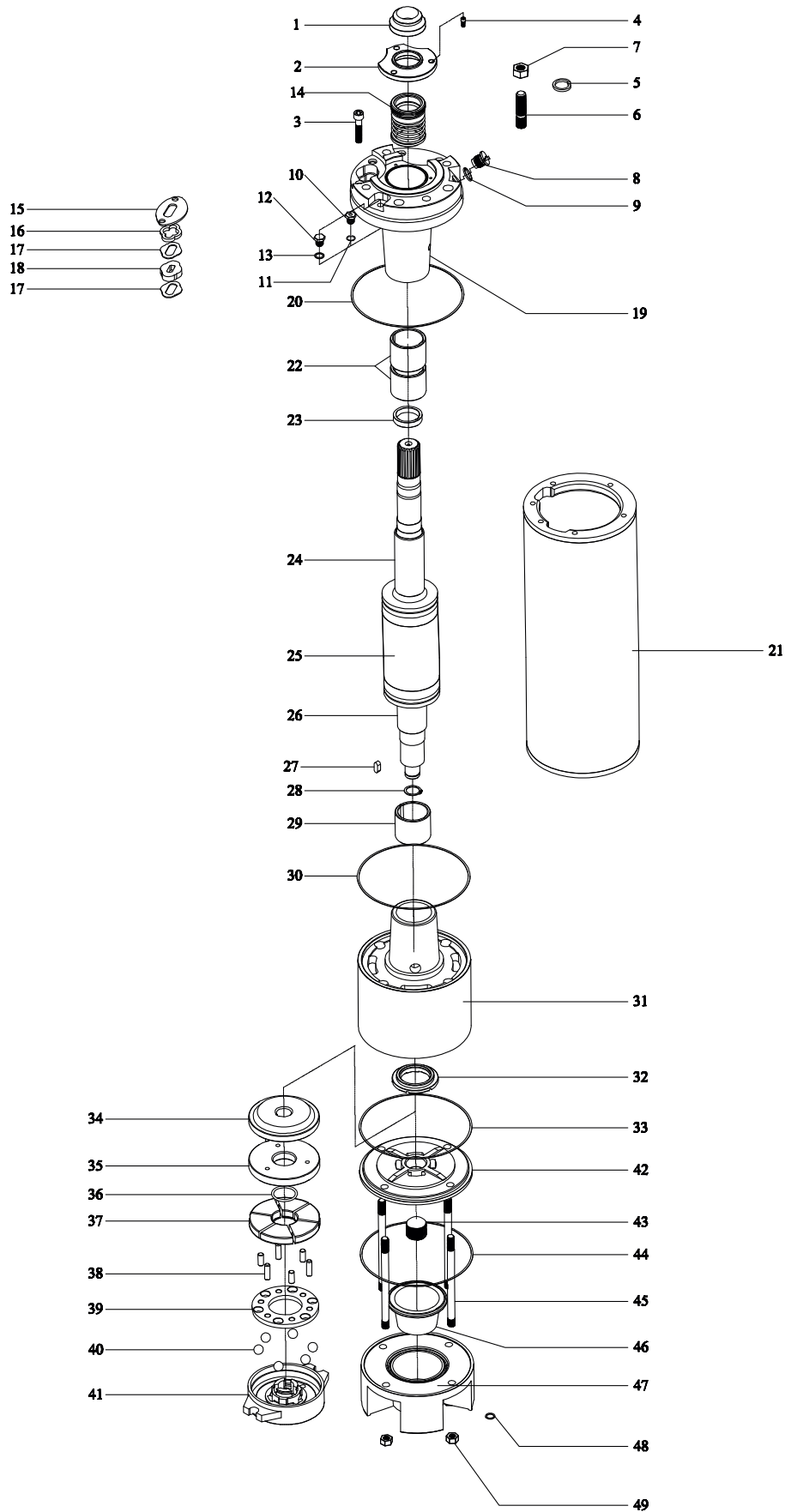


Teknik Veriler
Technical Datas
168 / 176



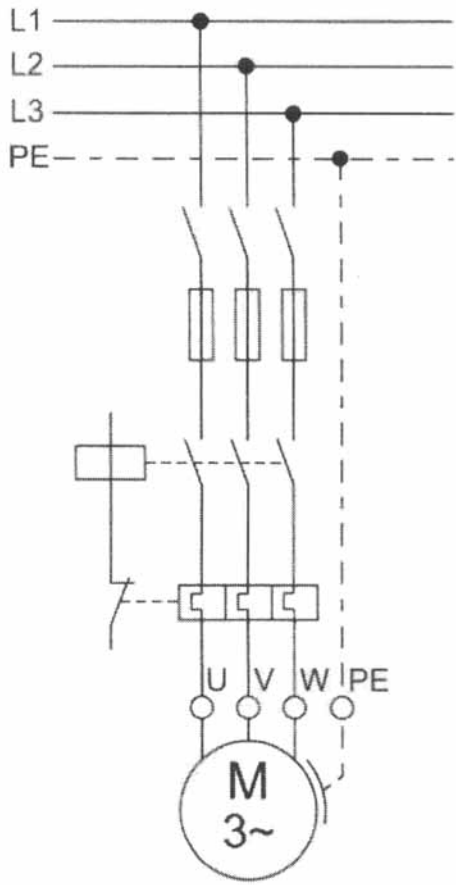


1 ÜST KAPAK KUM SIZDIRMAZLIK LASTİĐİ (NBR -EPM)	1 PLASTIC SAND HOLDER (NBR -EPM)
2 KUM SIZDIRMAZLIK PARÇASI (AISI420)	2 PLASTIC SAND HOLDER PART (AISI420)
3 CİVATA (INOX)	3 SCREW (INOX)
4 CİVATA (INOX)	4 SCREW (INOX)
5 RONDELA (ST304)	5 NUT WASHER (ST304)
6 POMPA BAĐLANTI SAPLAMASI (ST304)	6 PUMP CONNECTING PIN (ST304)
7 SOMUN (INOX)	7 NUT (INOX)
8 SU TAPASI (BRONZE)	8 CHECKVALVE (BRONZE)
9 ORİNG (NBR-70)	9 ORING (NBR-70)
10 PT100 ISI SENSÖR TAPASI (BRONZE)	10 CAP FOR PT100 HEAT SENSOR (BRONZE)
11 PT100 ISI SENSÖR TAPA ORINGİ (NBR)	11 CAP FOR PT100 HEAT SENSOR ORING (NBR)
12 PT100 ISI SENSÖRÜ KÖR TAPASI (BRONZE)	12 CLOSED CAP FOR PT100 HEAT SENSOR (BRONZE)
13 BAKIR PUL (COPPER)	13 COPPER SKREW (COPPER)
14 MEKANİK SALMASTRA (S/S/V)	14 MECHANICAL SEAL (S/S/V)
15 KABLO SIKMA FLANŐI (AISI304)	15 CABLE CLAMPING FLANGE (AISI304)
16 KABLO SIKMA PLASTİĐİ (PA-6)	16 CABLE CLAMPING PLASTIC (PA-6)
17 KABLO SIKMA PULU (AISI304)	17 CABLE CLAMPING WASHER (AISI304)
18 KABLO SIKMA SİLİKONU (NBR)	18 CABLE CLAMPING SILICONE (NBR)
19 ÜST KAPAK (GG20)	19 TOP COVER (GG20)
20 CONTA (KLINGER)	20 GASKET (KLINGER)
21 STATÖR (AISI 304)	21 STATOR (AISI 304)
22 RADYAL YATAK (CARBON)	22 RADIAL BEARING (CARBON)
23 MEKANİK SALMASTRA BİLEZİĐİ (ST37)	23 MECHANICAL SEAL RING (ST37)
24 MİL BURCU (ST37 -CrNi Coated)	24 SHAFT BUSH (ST37 -CrNi Coated)
25 ROTOR (AISI 420-X30 Cr13)	25 ROTOR (AISI 420-X30 Cr13)
26 MİL BURCU (ST37 -CrNi Coated)	26 SHAFT BUSH (ST37 -CrNi Coated)
27 KAMA (AISI420)	27 KEY (AISI420)
28 SEKMAN (ST39)	28 CIRCLIP (ST39)
29 RADYAL YATAK (CARBON)	29 RADIAL BEARING (CARBON)
30 CONTA (KLINGER)	30 GASKET (KLINGER)
31 ORTA KAPAK (GG20)	31 CENTRAL COVER (GG20)
32 SARI YATAK (BRONZE)	32 BRONZ BEARING (BRONZE)
33 CONTA (KLINGER)	33 GASKET (KLINGER)
34 EKSENEL YATAK TUTUCU (AISI420)	34 THRUST BEARING HOLDER (AISI420)
35 EKSENEK YATAK (CARBON)	35 THRUST DISK (CARBON)
36 ORİNG (NBR70)	36 ORING (NBR70)
37 MİÇEL PAPUÇ (AISI420)	37 SEGMENT (AISI420)
38 PİM GRUBU (INOX)	38 BOLT SET (INOX)
39 BİLYA TUTUCU (ST37 - Coated Cr+3)	39 BALL BEARING HOLDER (ST37 - Coated Cr+3)
40 BİLYA (INOX)	40 BALL BEARING (INOX)
41 EKSENEL YATAK KOVANI (GG20)	41 THRUST BEARING HOLDER CASE (GG20)
42 AYAR KAPAĐI (GG20)	42 ADJUSTMENT COVER (GG20)
43 AYAR VİDASI (INOX)	43 ADJUSTMENT SCREW (INOX)
44 CONTA (KLINGER)	44 GASKET (KLINGER)
45 ALT KAPAK BAĐLANTI SAPLAMASI (ST304)	45 KEY FOR LOWER COVER (ST304)
46 MEMBANT LASTİĐİ (NBR EPDM)	46 MEMBRANE PLASTIC (NBR EPDM)
47 ALT KAPAK (GG20)	47 LOWER COVER (GG20)
48 BAKIR PUL (COPPER)	48 COPPER SKREW (COPPER)
49 SOMUN (INOX)	49 NUT (INOX)

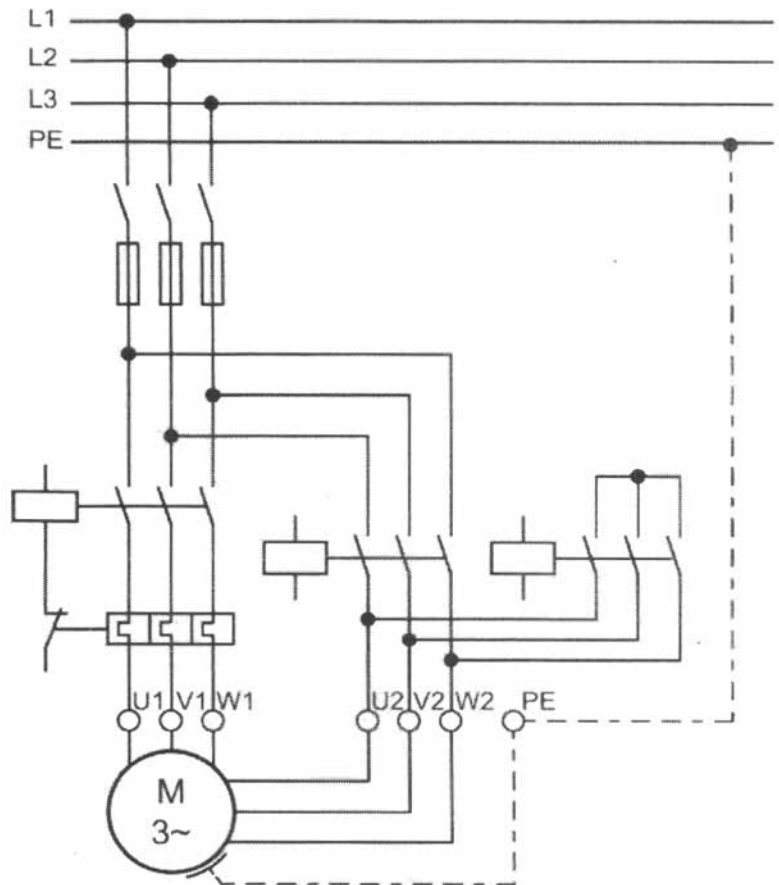
* KataloĐumuzdaki teknik özellikler ve tasarım basım tarihindeki koŐullara göredir. Ürünlerimizin tasarım ve teknik özellikleri deĐiŐtirme hakkımız saklı tutulmuŐtur.

* Technical features and design at our catalogue are related to conditions at the printing date. Our rights for changing our product design and technical features are reserved.

VOLTAGEK	MOTOR		3xm2 NYY CABLE													
	wH	p1	.5	2.54		61	01	62	53	55	07	09	5	120	150	
220 V	0.37	0.5		135	210											
	0.55	0.75		90	145	215										
	0.75	1.06		5	105	155	255									
	1.11	.5		45	70	105	175	275								
	1.52	.0		30	50	80	130	210								
380 V D.O.L.	2.23	.0		20	35	55	90	140								
	3.00	4.0		150	240	360										
	4.50	6		110	170	260	450									
	5.50	7.58		0	130	190	340	540								
	7.50	10.0		60	100	150	250	410								
	11	15.0			60	100	170	280	440							
	15	20				80	130	210	330	460	660					
	18.5	25					100	170	260	370	175					
	22	30					90	140	220	310	440					
	30	40						100	170	230	330	460				
	37	50							130	190	270	380	520			
	45	60								110	160	230	320	440	550	
	55	75									120	170	240	330	410	530
	62.5	85									110	150	220	290	370	470
	81	110									86	130	180	245	310	390
	92	125										110	160	220	275	340
	110	150											130	180	220	290
	129	175												155	195	250
	150	200												130	170	220
165	225												125	150	190	
185	250														170	
380 V Y / Δ	3.00	4.0	140	230	370											
	4.50	6	100	170	270	400										
	5.50	7.57	0	120	200	300	500									
	7.50	10.0	57	90	150	220	380									
	11	15.0	39	60	100	150	260	400								
	15	20		50	80	110	200	310	490							
	18.5	25			60	90	160	250	400	560						
	22	30			50	70	130	210	340	470						
	30	40				60	100	160	250	360	500					
	37	50				40	80	130	200	290	410					
	45	60					70	110	170	240	350	480				
	55	75						80	130	180	260	360	500			
	62.5	85						70	120	170	245	340	465	535		
	81	110							100	150	200	290	380	440	540	
	92	125								120	170	230	300	370	450	
	110	150								100	140	200	250	300	370	
	129	175									125	170	230	280	330	
	150	200										150	190	230	280	
	165	225											130	170	200	240
185	250											125	160	190	230	



D.O.L. Connection
Direk Kalkış Bağlantı



S.D. Connection
Yıldız Üçgen Bağlantı

